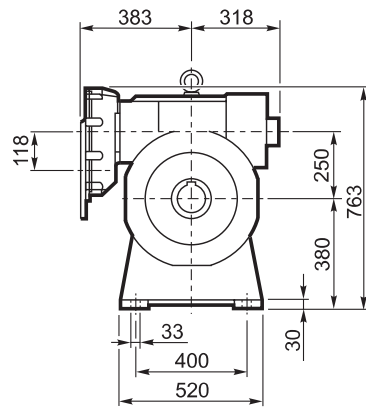
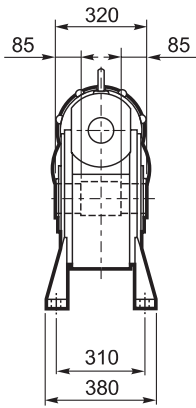
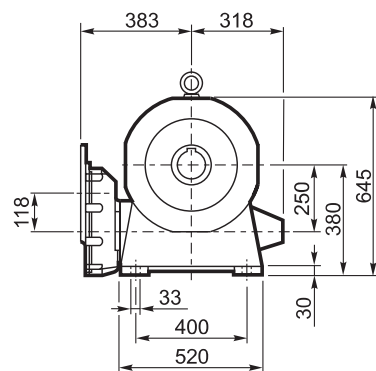
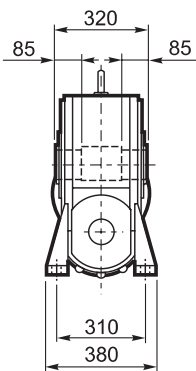


VFR 250...P(IEC)

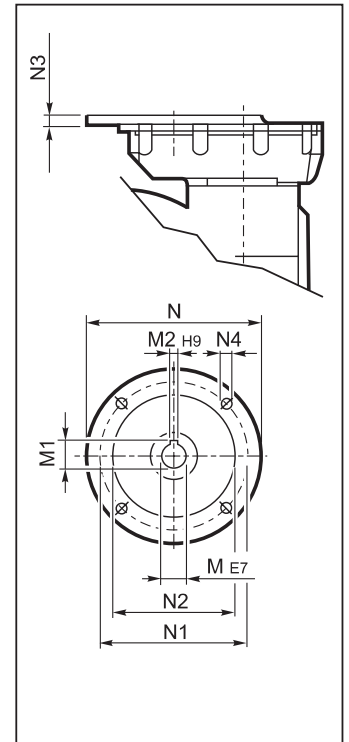
A



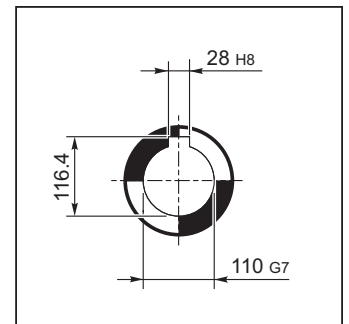
N

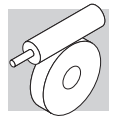


INPUT

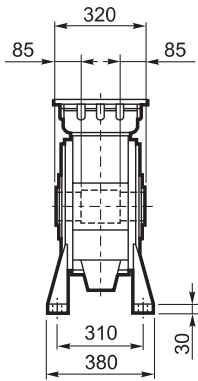


OUTPUT

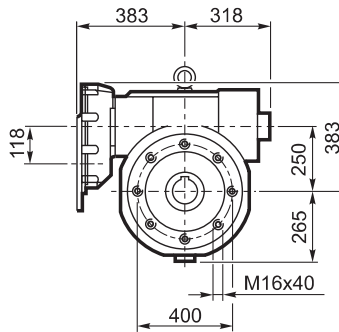
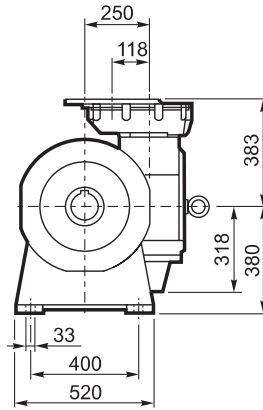
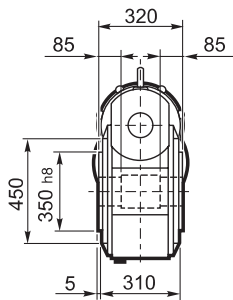




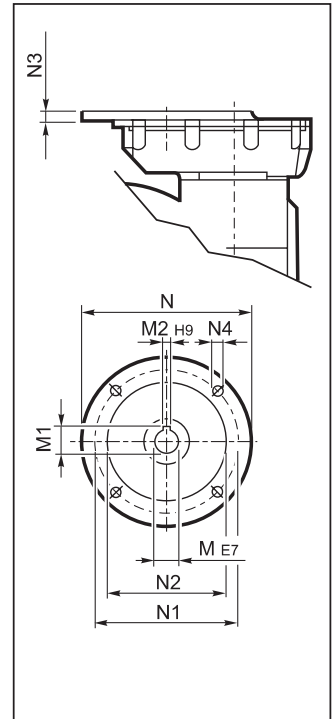
V



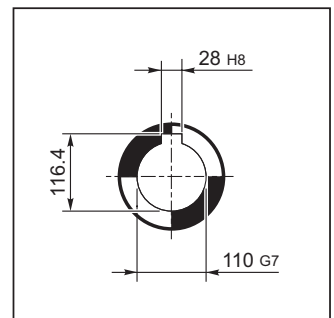
P



INPUT



OUTPUT



Nelle forme costruttive A e P viene montata la ventola di raffreddamento.

Fan cooling as standard on versions A and P.

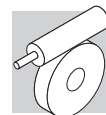
In den Ausführungen A und P wird das Lüfferrad eingebaut.

Dans les formes de construction A et P, il est prévu un ventilateur de refroidissement.

VFR 250

		M	M1	M2	N	N1	N2	N3	N4	kg
VFR 250	P100 B5	28 K6	31.3	8	250	215	180	13	M12x35	295
VFR 250	P112 B5	28 K6	31.3	8	250	215	180	13	M12x35	
VFR 250	P132 B5	38 J6	41.3	10	300	265	230	13	M12x35	
VFR 250	P160 B5	42 J6	44.3#	12	350	300	250	18	M16x60	

Linguetta ribassata / Lowered key / Verkleinertes Paßfeder / Clavette à hauteur réduite

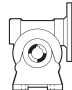

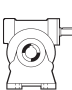



VFR 250

9000 Nm

	i	η_s %	$n_1 = 2800 \text{ min}^{-1}$						$n_1 = 1400 \text{ min}^{-1}$								
			n_{2-1} min	M_{n2} Nm	P_{n1} kW	R_{n1} N	R_{n2} N	η_d %	n_{2-1} min	M_{n2} Nm	P_{n1} kW	R_{n1} N	R_{n2} N	η_d %			
VFR 250	VFR 250_30	30	68	93	4800	54	2800	27800	89	47	6000	34	3500	34000	86	175	
	VFR 250_45	45	63	62	5300	41	2800	33300	87	31	6400	25	3500	41300	84		
	VFR 250_60	60	58	47	5950	35	2800	37200	85	23.0	7100	21	3500	46100	81		
	VFR 250_90	90	52	31	5500	22	2800	44700	81	15.6	6000	12.6	3500	52000	78		
	VFR 250_120	120	40	23.3	6500	21.3	2800	48500	76	11.7	7000	12.1	3500	52000	71		
	VFR 250_150	150	35	18.7	6200	16.9	2800	50000	73	9.3	6500	9.5	3500	52000	67		
	VFR 250_180	180	37	15.6	5600	12.9	2800	50000	72	7.8	6300	7.7	3500	52000	67		
	VFR 250_240	240	31	11.7	5200	9.7	2800	50000	67	5.8	5400	5.4	3500	52000	61		
	VFR 250_300	300	28	9.3	4800	7.6	2800	50000	63	4.7	5000	4.3	3500	52000	57		
				$n_1 = 900 \text{ min}^{-1}$						$n_1 = 500 \text{ min}^{-1}$							
	VFR 250	VFR 250_30	30	68	30.0	6500	24	3700	39600	84	16.7	7600	16.1	4200	47600	83	175
		VFR 250_45	45	63	20.0	6800	17.5	3700	48000	82	11.1	7900	11.6	3500	52000	80	
		VFR 250_60	60	58	15.0	7600	15.2	3700	52000	79	8.3	8600	9.9	3500	52000	76	
		VFR 250_90	90	52	10.0	6500	9.3	3700	52000	74	5.6	7400	6.1	3500	52000	71	
VFR 250_120		120	40	7.5	7500	8.8	3700	52000	67	4.2	9000	6.2	3500	52000	64		
VFR 250_150		150	35	6.0	7000	7.0	3700	52000	63	3.3	8600	5.1	3500	52000	59		
VFR 250_180		180	37	5.0	6700	5.7	3700	52000	62	2.8	7600	3.8	3500	52000	59		
VFR 250_240		240	31	3.8	5800	4.1	3700	52000	56	2.1	6500	2.7	3500	52000	52		
VFR 250_300	300	28	3.0	5300	3.2	3700	52000	52	1.7	6000	2.2	3500	52000	48			

VFR 250

	i	J ($\cdot 10^{-4}$) [Kgm ²]							
									
		P100	P112	P132	P160	P180	P200	P225	HS
VFR 250	VFR 250_30	30	71	71	71	70	—	—	75
	VFR 250_45	45	58	58	57	57	—	—	61
	VFR 250_60	60	55	55	55	54	—	—	58
	VFR 250_90	90	48	48	48	48	—	—	52
	VFR 250_120	120	55	55	54	54	—	—	58
	VFR 250_150	150	55	55	54	54	—	—	58
	VFR 250_180	180	46	46	45	45	—	—	49
	VFR 250_240	240	46	46	45	45	—	—	49
VFR 250_300	300	45	45	44	44	—	—	48	